

Projects ID and Title: NSF-SCH-2025-271 &

Smart Home
Automation with Solar
Off-Grid Power

Participant's name : JAYIZA NAUREEN M

School : K. H. Matric. Girls Hr. Sec. School

City & State : Melvisharam, Tamil Nadu

✓Introduction

With the increasing demand for renewable energy and technology-driven solutions, this project explores how a solar-powered, off-grid system can support a smart home automation setup. This approach helps reduce electricity bills, dependence on non-renewable energy, and environmental impact while making daily life more efficient and comfortable.

1. Environmental Awareness

Today, energy consumption is one of the biggest contributors to pollution and climate change. By using renewable sources like solar energy, we can reduce harmful effects on the environment.

2. Rising Electricity Costs

Many people face high electricity bills. Solar off-grid systems offer a way to save money by using clean, free sunlight instead of expensive grid power.

3. Energy Independence

In rural or remote areas where grid power is unreliable or unavailable, solar-powered systems provide independence and stability.

4. Technological Advancement

Smart home devices are becoming more popular. Combining these devices with renewable energy makes homes more efficient, safe, and easy to manage.

5. Hands-On Learning Opportunity

This project allows students to understand solar energy, basic electronics, programming, and automation in a practical, interactive way.

6. Promotes Sustainable Living

Teaching students how to create energy-efficient homes helps build responsible and environmentally conscious citizens.

7. Future-Oriented

As technology and renewable energy are the future, learning how to integrate both prepares students for advanced careers and problem-solving in real life.

✔Background Information:

Solar Power: Solar panels capture sunlight and convert it into electricity. Off-grid solar systems store energy in batteries for use during nighttime or cloudy days.

Smart Home Automation: Using devices that can control lighting, temperature, security, and appliances remotely through sensors and mobile apps.

Benefits: Reduces carbon footprint, provides energy independence, and improves convenience and security.

✔Objective:

To demonstrate how solar energy can power smart home devices without relying on grid electricity.

To showcase energy efficiency and eco-friendly living.

To analyze how automation can improve energy use and convenience

✓Hypothesis:

If a solar-powered off-grid system is used to support smart devices in a home, then it will reduce dependence on grid power and enhance energy efficiency while maintaining user comfort.

Experimental Procedures:

✓Materials Required:

Small solar panel (20–50W)

To generate electricity from sunlight

Battery pack (12V or Li-ion) 1

To store solar energy

Smart devices (bulb, fan, sensor, etc.)3–5

For home automation tasks

Microcontroller (like Arduino/Raspberry Pi)1

To control devices

Wi-Fi module 1

To enable remote control

Relay module 1

To switch devices ON/OFF

Wires, connectors

As needed for connections

Smartphone or tablet 1

To operate the system remotely

Multimeter 1

To measure voltage and current

Mounting board 1

To assemble the circuit

✓Experimental Setup:

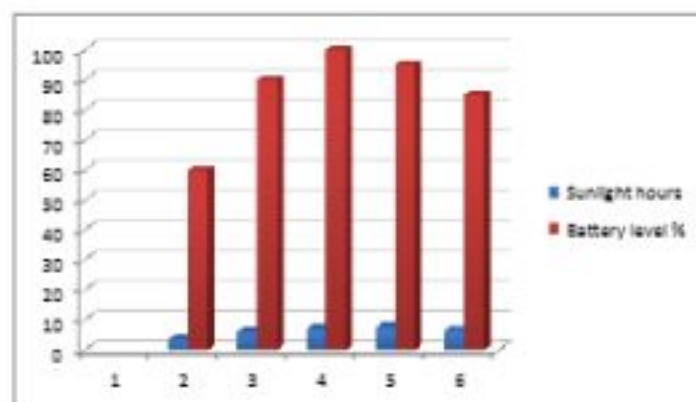
1. Set up the solar panel in a location where it receives maximum sunlight.
2. Connect the solar panel to the battery for energy storage.
3. Integrate the battery with a microcontroller to control smart devices.
4. Program the microcontroller to turn on/off devices based on sensor inputs or remote commands.
5. Monitor energy usage and device performance during different times of the day.

✓Procedure:

1. Install the solar panel outdoors and connect it to the battery.
2. Assemble the smart devices on a board representing the home setup.
3. Connect sensors and relay modules to the microcontroller.
4. Write and upload code to control devices based on sensor data and remote commands.
5. Use a smartphone app or web interface to control the system.
6. Record energy production, usage, and efficiency over a week.
7. Analyze how much energy is saved compared to using grid electricity.

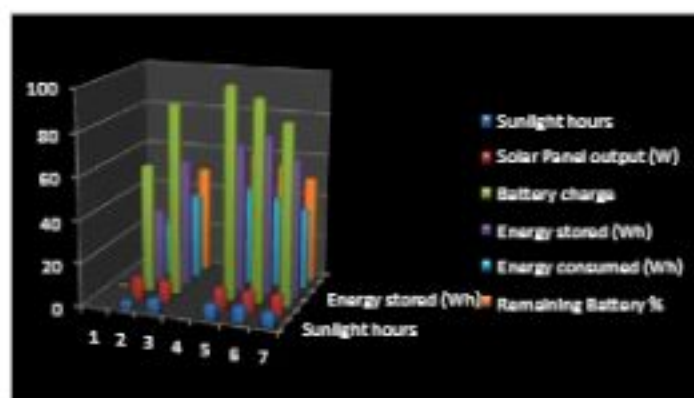
Data Analysis:

Date	Sunlight hours	Battery level %	Devices used	Energy consumed	Remarks
				(Wh)	
Day 1	3.5	60	LED Light,Fan	25/Cloudy-low generation	-
Day 2	6	90	LED Light,Fan,Wi-Fi Router	40/Clear sky-good charging	-
Day 3	7	100	All devices active	45/Full charge achieved	-
Day4	7.5	95	LED,Fan,Wi-Fi, Security Cam	42/Slight clouds in evening	-
Day5	6.5	85	LED LIGHT,Fan,Pump	38/Moderate use-partial drain	-



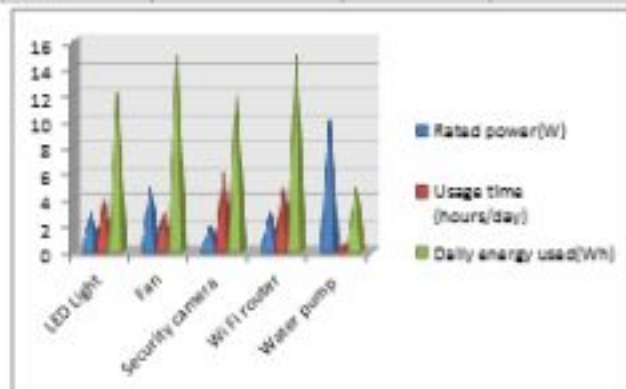
Daily Energy Generation and Usage:

Date	Sunlight hours	Solar Panel output (W)	Battery charge	Energy stored (Wh)	Devices used	Energy consumed (Wh)	Remaining Battery %
			%				
Day 1	3.5	10	60	35	LED,Fan	25	40
Day 2	6	10	90	60	LED,Fan,Wi-Fi	40	50
Day 3	7	10	100	70	All devices	45	60
Day 4	7.5	10	95	75	LED,Fan,Wi-Fi,Cam	42	55
Day 5	6.5	10	85	65	LED,Fan,Pump	38	50



Device Power Consumption:

Devices	Rated power(W)	Usage time (hours/day)	Daily energy used(Wh)	Notes
LED Light	3	4	12	Used during evening /night
Fan	5	3	15	Active during mid Day
Security camera	2	6	12	Always on when sunlight available
Wi Fi router	3	5	15	Continuous monitoring /control
Water pump	10	0.5	5	Used for short watering cycles

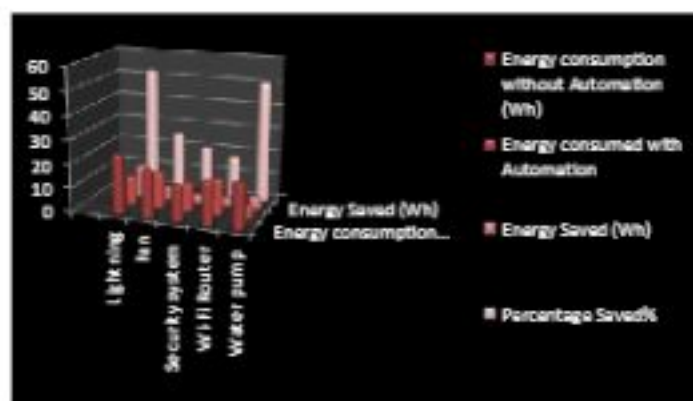


Sensor Data and Automation Response:

Time	Sensor Trigger	Device activated	Automation rule	Result
6:30 AM	Light sensor detect sunrise	Turn OFF LED light	Energy saving rule	Reduce the morning power use
10:00AM	Temperature sensor > 30 degree Celsius	Turn ON fan	Comfort rule	Maintains room cool
6:00PM	Light sensor low	Turn ON LED light	Lightning roll	Auto illumination
9:00PM	Motion sensor triggered	Security camera ON	Security rule	Alerts owner remotely
5:30 AM	Soil moisture < threshold	Water pump ON	Irrigation rule	Auto watering done 5 minutes

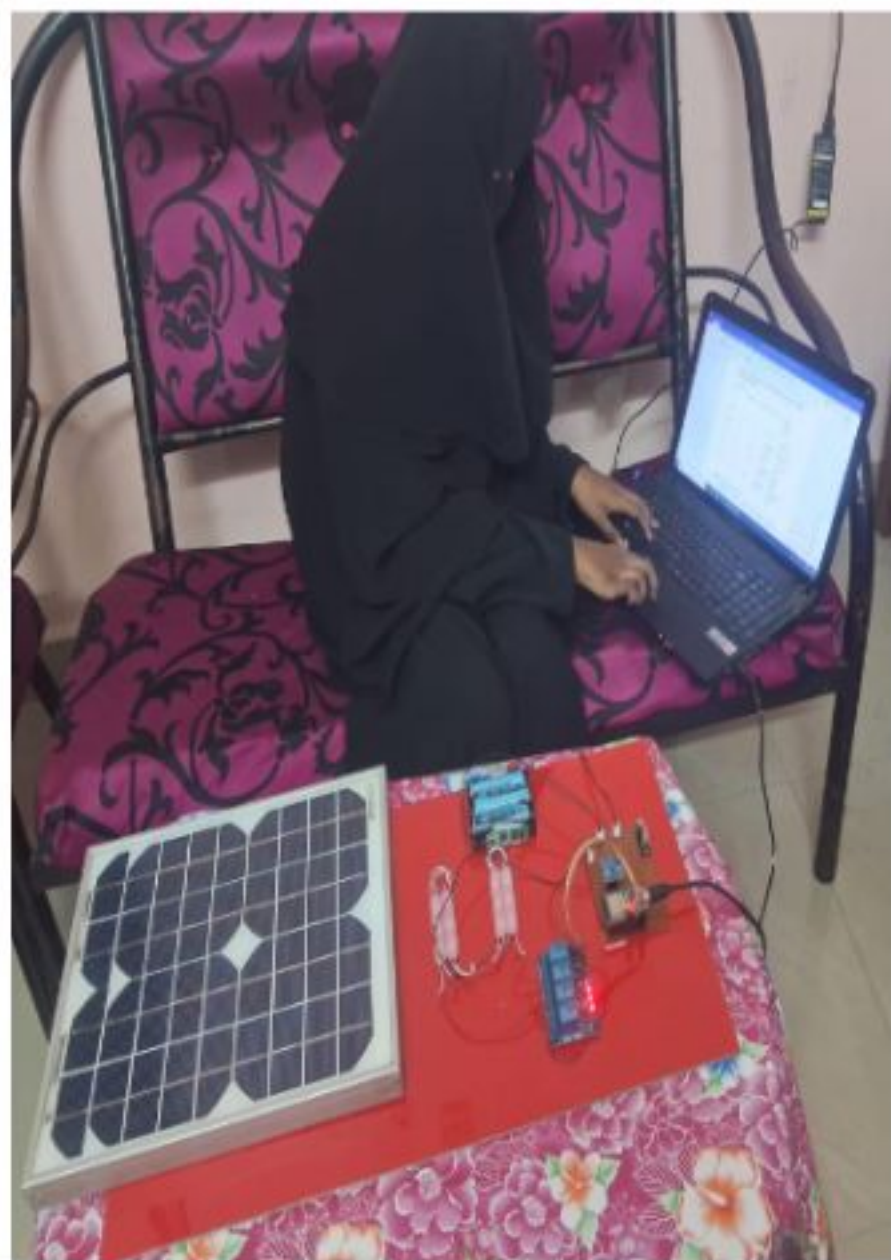
Energy Efficiency Improvement:

Scenario	Energy consumption without Automation (Wh)	Energy consumed with Automation (Wh)	Energy Saved (Wh)	Percentage Saved%
Lightning	25	12	13	52
Fan	20	15	5	25
Security system	15	12	3	20
Wi-Fi Router	18	15	3	17
Water pump	19	5	5	50











Risk and Safety:

- Work under supervision
- Use proper tools
- Check Connections Carefully
- Handle Batteries Carefully
- Secure Mounting
- Keep Water Away
- Use Protective Gear
- Monitor the System Regularly

Bibliography :

https://www.researchgate.net/publication/381976695_Solar_Powered_Home_Automation_and_Home_Security_System

<https://solaremporium.com.au/solar-energy-smart-home-automation-sustainable-living/>

<https://waareertl.com/solar-powered-smart-homes-embracing-the-future-of-sustainable-living/>